



***Introduction to  
Population Health Management:  
Prevalidation Webinar***

**Wednesday, February 20, 2019 | Webinar  
2:00pm – 3:30pm ET**

**Information presented in this NCQA Education program is verified for accuracy before its presentation. In the event of any real or perceived conflict with an NCQA publication, the publication and/or any in-force published correction, clarification or policy change, including a Frequently Asked Question (FAQ) or Policy Update document posted on the NCQA Website, takes precedence.**

© (2019) by the National Committee for Quality Assurance  
1100 13th Street, NW, Third Floor, Washington, DC 20005  
202/955-3500  
202/955-3599 (fax)  
[www.ncqa.org](http://www.ncqa.org)  
All rights reserved. Printed in the USA.

No part of this publication may be reproduced or transmitted in any form or by any means, electronic or mechanical, including photocopy, recording, or any information storage and retrieval system, without written permission.

# NCQA Contact Information

---

Customer Support

888-275-7585

- General Information
- Educational Seminar Registration
- Publications Center

**NCQA's web site**

[www.ncqa.org](http://www.ncqa.org)

**Policy Clarification Support**

<https://my.ncqa.org/>

**PCMH CEC**

<http://www.ncqa.org/cec>

# Table of Contents

---

Section 1 Webinar Information

Section 2 Slide Presentation



# **Webinar Information**



# ***Introduction to Population Health Management: Prevalidation Webinar***

This 90-minute program is designed for the new participant preparing for NCQA's Population Health Management Prevalidation. An overview of the Population Health Management Prevalidation process will be reviewed, focusing on eligibility requirements, how to apply and reviewable elements in Health Plan Accreditation. Additionally, potential designations will be highlighted and available automatic credit. This educational webinar series will be presented by Natalie Mueller and includes a live question-and-answer session following the presentation. Participants are encouraged to purchase the Population Health Management Prevalidation Handbook to enhance the learning experience.

## **Agenda**

---

### ***Welcome***

Tina King, Program Manager, Education

---

### **Presenters**

Natalie Mueller, MPH, Manager, Product Development

---

### **Open Discussion/Question and Answer Session**

---

### **Closing Remarks**

---

## **Objectives**

---

- Describe the PHM Prevalidation process.
- Examine the applicable elements in Health Plan Accreditation.
- Identify eligibility for the PHM Prevalidation.
- Describe the different potential designations earned.
- Discuss available automatic credit for organizations using PHM Prevalidated tools.

## **Continuing Education**

---

This live webinar educational activity is a non-CME/CNE/CPE/AAPA/APA/ASWB program. No educational credits will be awarded for this seminar.

# Faculty

---

**Natalie Mueller, MPH**

Manager, Product Development

NCQA

Washington, DC

## Faculty Biographies

---

**Natalie Mueller, MPH**

Natalie is a Manager in Product Development and has been with NCQA since 2015. In this role, she updates existing accreditation products and creates new accreditation and certification products to meet market and customer needs. She currently leads the Population Health Management project, transforming NCQA's flagship product, Health Plan Accreditation, from single-condition management towards a population health-based approach that focuses on whole-person care.

This work will go beyond Health Plan Accreditation as other accreditation and certification products are adapted for the new approach. She attended Penn State University where she received her Bachelor of Science in Nutritional Science and the University of Pittsburgh for her Master in Public Health.







# Slide Presentation





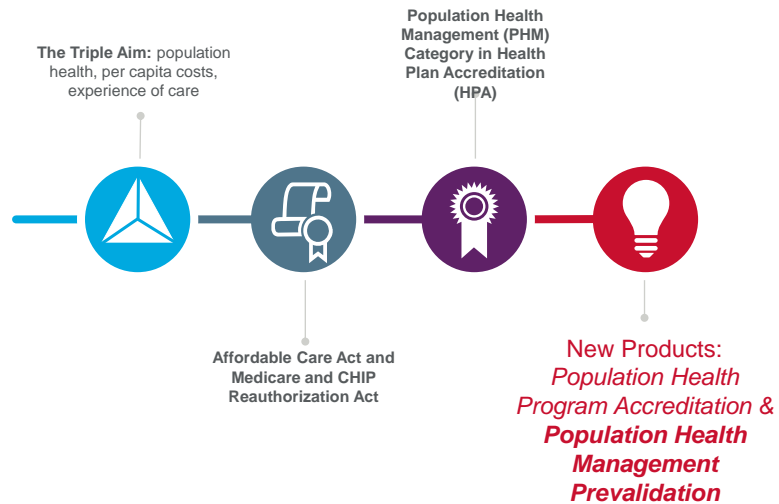
# Introduction to: *Population Health Management Prevalidation*

Natalie Mueller, Manager, Product Development

All materials © 2019 National Committee for Quality Assurance

1

## Journey to Population Health Management



2

## What is Population Health Management?



*A model of care that strives to address patients' health needs at all points along the continuum of care, including the community setting, by increasing patient participation and engagement and targeting interventions.*

3

## What is Prevalidation?

*Opportunity for vendors to demonstrate their HIT solutions can provide support for organizations or practices pursuing NCQA accreditation or recognition.*

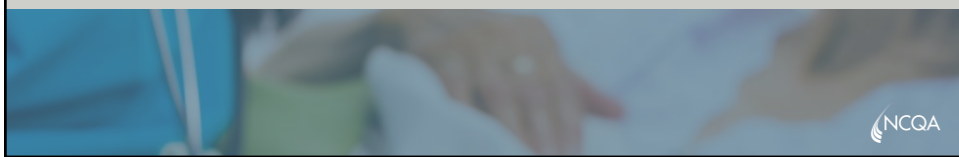


### **NCQA has two Prevalidation Programs:**

- **Recognition Program Prevalidation:** Reviews vendor's tools against PCMH Recognition or PCSP Recognition
- **PHM Prevalidation:** Reviews vendor's tools against PHM-related elements in HPA, MBHO, PHP and CM.

4

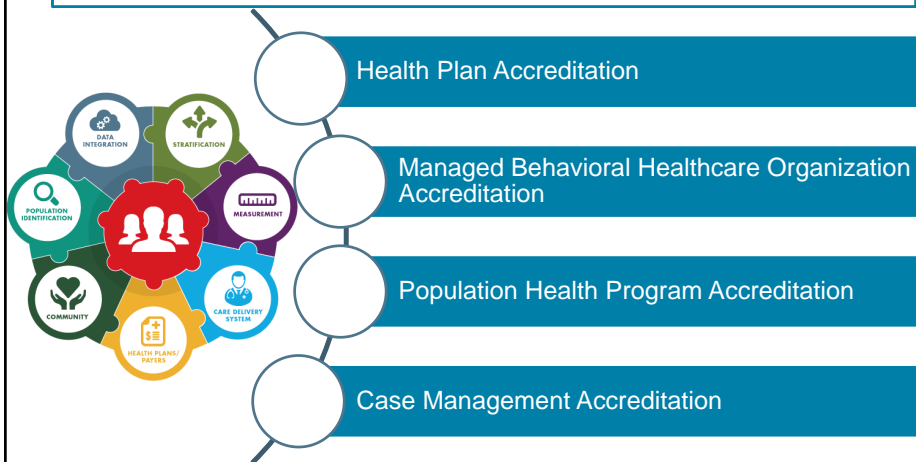
*New Product:*  
Population Health  
Management Prevalidation



5

### Population Health Management (PHM) Prevalidation

*Reviewed against and offers credit to for the PHM-related standards in:*



6

## Eligibility: What types of organizations qualify for PHM Prevalidation

*Many different types of health IT solutions/tools may be eligible such as...*



*Population health management tools*



*Risk stratification tools*



*Data aggregators*



*Case management systems*



*Population assessment tools*



*Prototype tools are ineligible. They must be fully implemented or developed.*

## What is the cost for PHM Prevalidation?

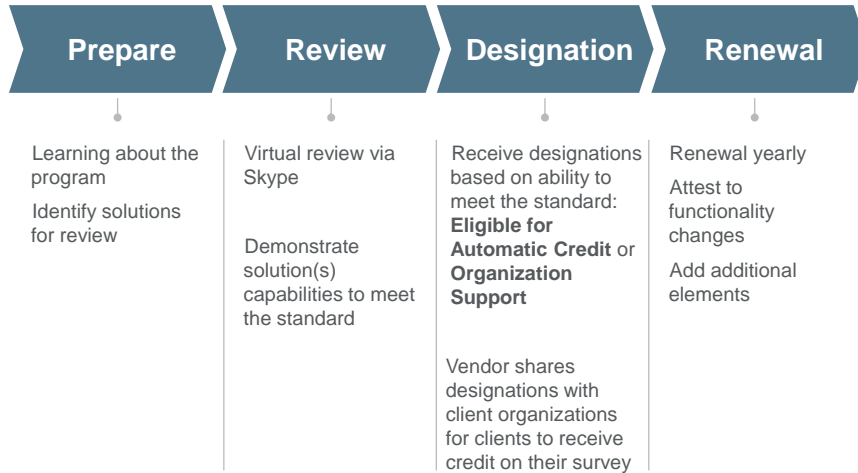


**Application Fee: \$10,000**  
**+ Per Element Fee (\$2,000 per element)**

*Annual renewal: between \$2,000-\$5,000  
depending on the number of elements*

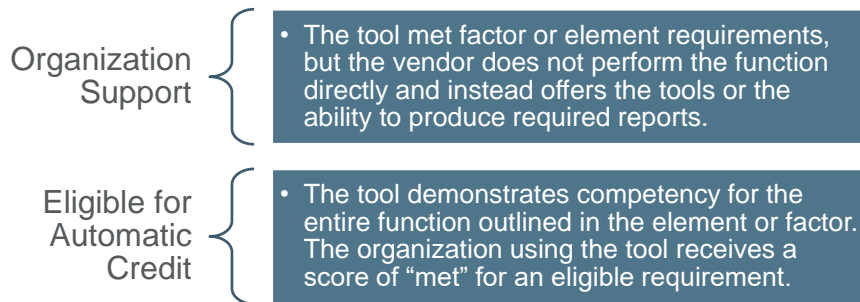
## PHM Prevalidation for Health IT Vendors

*The process*



9

## What are the designations?



### *Did you know?*

Designations can be awarded at the factor level.



10



# PHM Prevalidation Requirements



11

## PHM Prevalidation for Health IT Vendors

*Reviewable elements*



**PHM 2A: Data  
Integration**

**PHM 2B: Population  
Assessment**

**PHM 2D:  
Segmentation**

**PHM 5B: Case  
Management  
Systems**



12



## PHM 2A: Data Integration

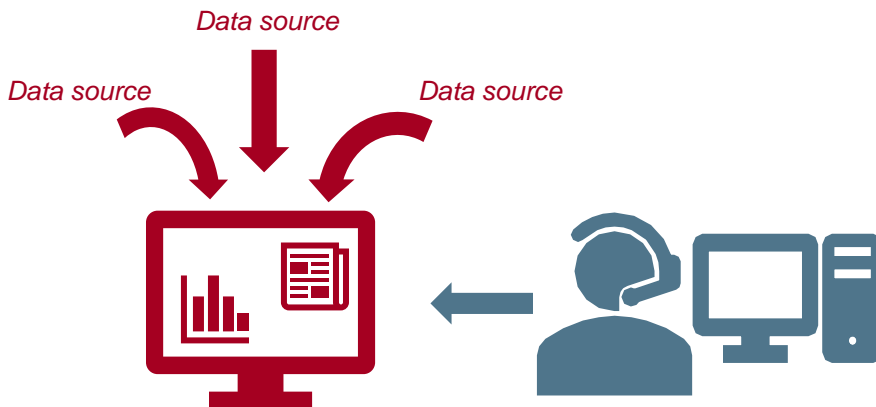
The organization integrates the following data to use for population health management functions:

1. Medical and behavioral claims or encounters.
2. Pharmacy claims.
3. Laboratory results.
4. Health appraisal results.
5. Electronic health records.
6. Health services programs within the organization.
7. Advanced data sources.

13

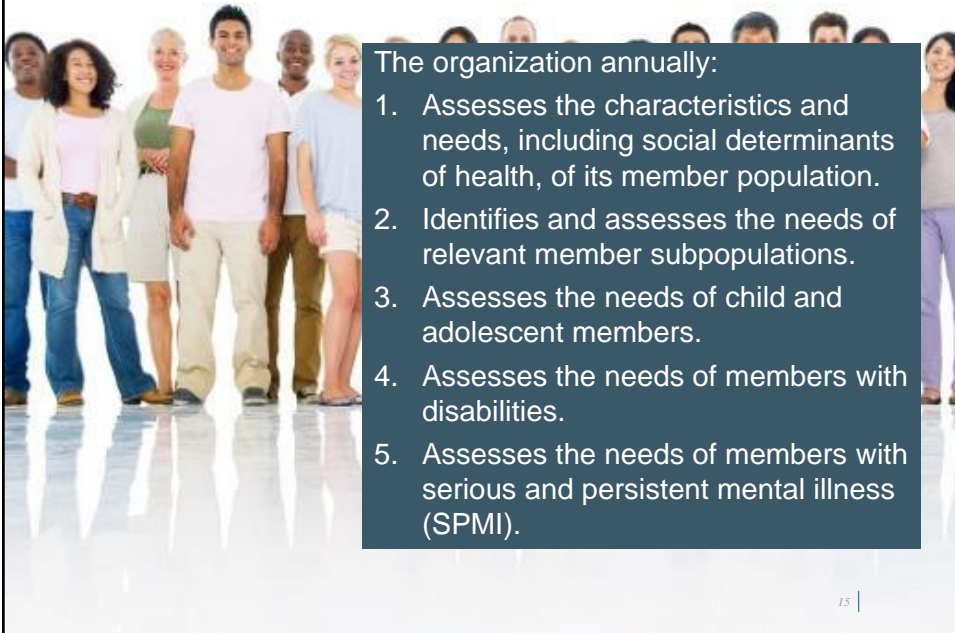
## PHM 2A: Data Integration

*Example*



14

## PHM 2B: Population Assessment



The organization annually:

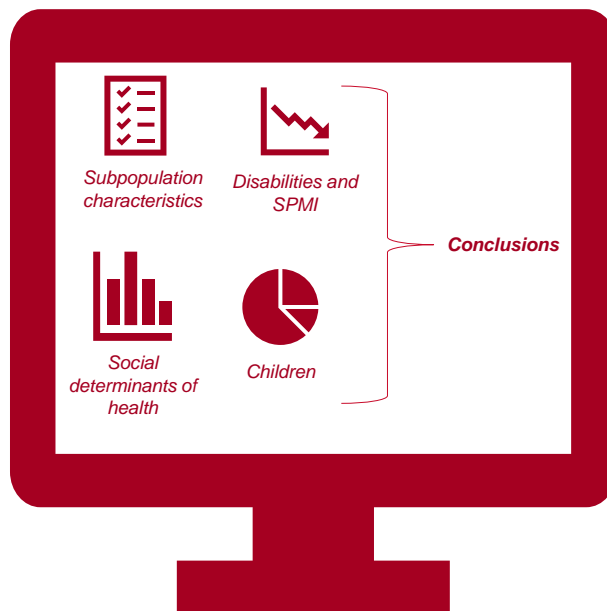
1. Assesses the characteristics and needs, including social determinants of health, of its member population.
2. Identifies and assesses the needs of relevant member subpopulations.
3. Assesses the needs of child and adolescent members.
4. Assesses the needs of members with disabilities.
5. Assesses the needs of members with serious and persistent mental illness (SPMI).

15 |

15

## PHM 3A: Population Assessment

*Example*



16

## PHM 2D: Segmentation

At least annually, the organization segments or stratifies its entire population into subsets for targeted intervention.

17

## PHM 2D: Segmentation

*Example*

Subset of Population	Targeted Intervention for Which Members Are Eligible	Number of Members	Percentage of Membership
Multiple chronic conditions	Complex case management: Over 65	2,000	5%
Over 65, needs assistance with 2 or more ADLs	Long-term services and supports	2,800	7%
COPD: High risk	Complex case management: Over 65	1,600	4%
Osteoporosis: High-risk women	Targeted member newsletter	8,800	22%
BMI over 30	Weight management program	4,800	12%
No risk factors	Routine member newsletters	12,000	30%
No associated data	None	8,000	20%

18

## PHM 5B: Case Management Systems

The organization uses case management systems that support:

1. Evidence-based clinical guidelines or algorithms to conduct assessment and management.
2. Automatic documentation of staff ID, and the date and time of action on the case or when interaction with the member occurred.
3. Automated prompts for follow-up, as required by the case management plan.

19

## PHM 5B: Case Management Systems

*Example (factor 3)*



*Case Management Plan, missing a task*



20

## Related elements in other Products

*Designations are awarded for all products based on elements reviewed*



Health Plan Accreditation Element	Related MBHO Element	Related PHP Element	Related CM Element
<b>PHM 2A: Data Integration</b>	NA	PHP 3A: Data Integration	NA
<b>PHM 2B: Population Assessment</b>	QI 9A: Population Assessment	PHP 3A: Population Assessment	CM 2A: Population Assessment (factor 1)
<b>PHM 2D: Segmentation</b>	NA	PHP 4A: Segmentation	NA
<b>PHM 5B: Case Management Systems</b>	QI 9F: Case Management Systems	NA	CM 4A: Case Management Systems



## PHM Prevalidation: After Prevalidation



## How do my client organizations receive credit on their surveys?



Tool receives prevalidated designation(s)



Share "Letter of Eligibility" with client



Client submits letter and vendor agreement to NCQA during their survey

23

## PHM Prevalidation Directory

*Found on NCQA.org*

Home / Our Programs / Data and Information Technology / HIT and Data Certification / Population Health Management Prevalidation / Vendors

### OUR PROGRAMS

- eMeasure Certification
- Health Information Technology Prevalidation Programs
- CAHPS Survey for PCMH
- CAHPS 5.0H Survey Certification
- HEDIS Compliance Audit Certification
- Measure Certification

## Find a Prevalidation Population Health Management Vendor

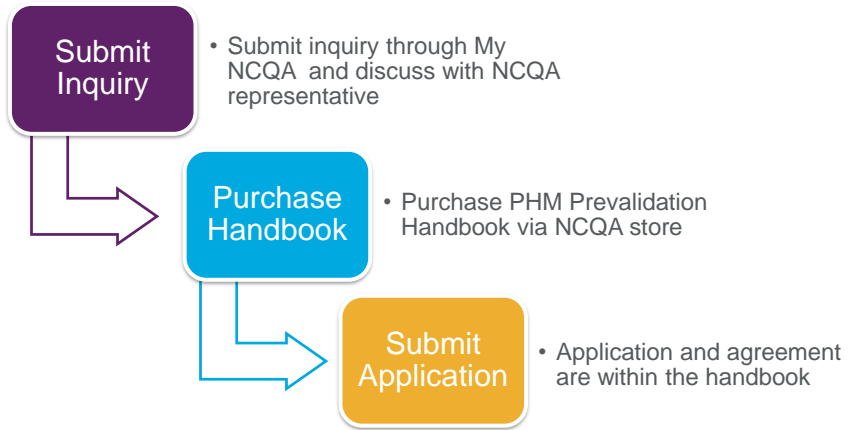
Health IT systems that earn Population Health Management Prevalidation status have the functionality to help organizations meet program requirements for NCQA Accreditation programs: Health Plan, Managed Behavioral Healthcare Organization, Case Management and Population Health Program.

VENDOR NAME	NCQA PROGRAM SUPPORTED	PREVALIDATED PRODUCTS	VENDOR EMAIL
<a href="#">Altruista Health</a>	<ul style="list-style-type: none"> <li>• Health Plan Accreditation 2018, 2019</li> <li>• Case Management Accreditation</li> </ul>	Guiding Care Version 8.7+	<a href="mailto:rljaysr@altruistahealth.com">rljaysr@altruistahealth.com</a>



24

## How to apply



*Questions*